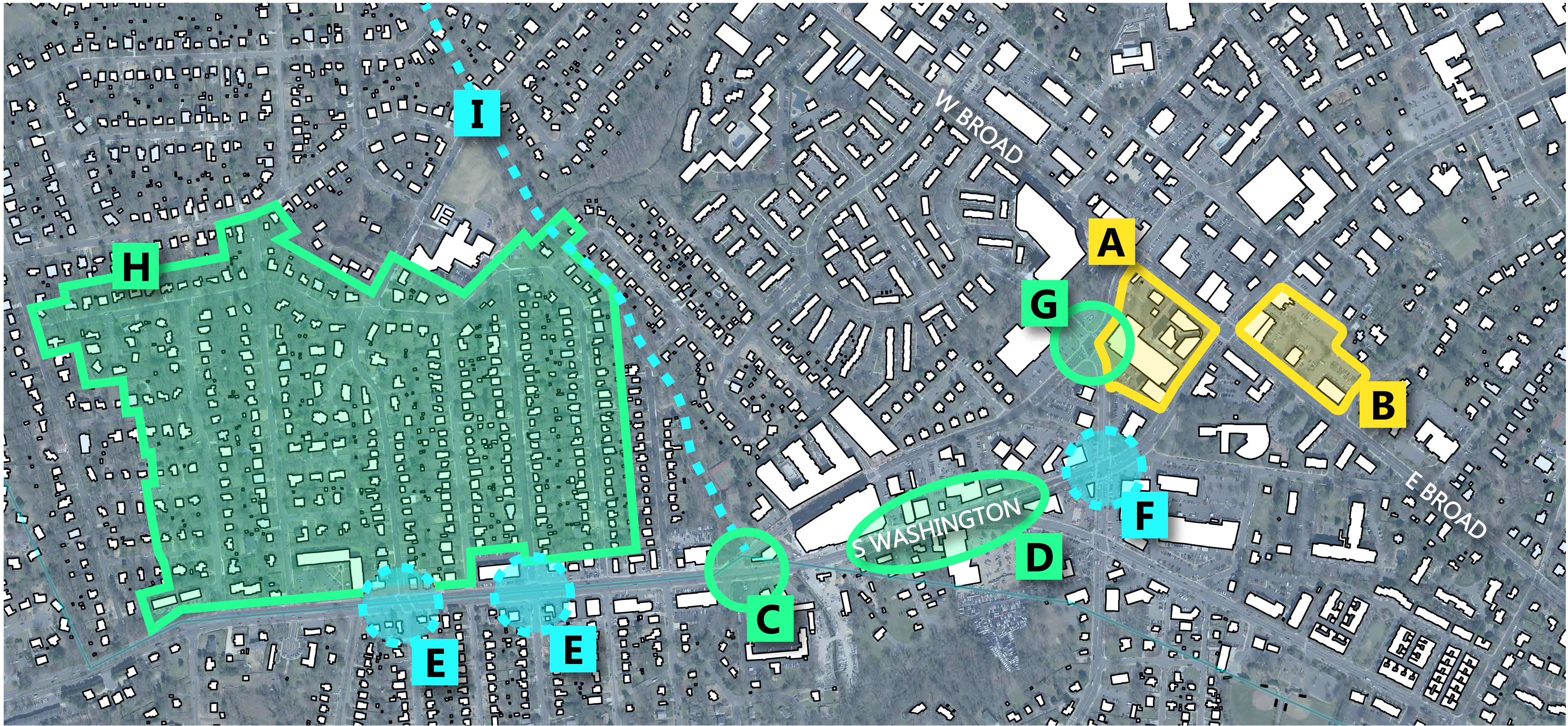


Upcoming South Washington Corridor Projects



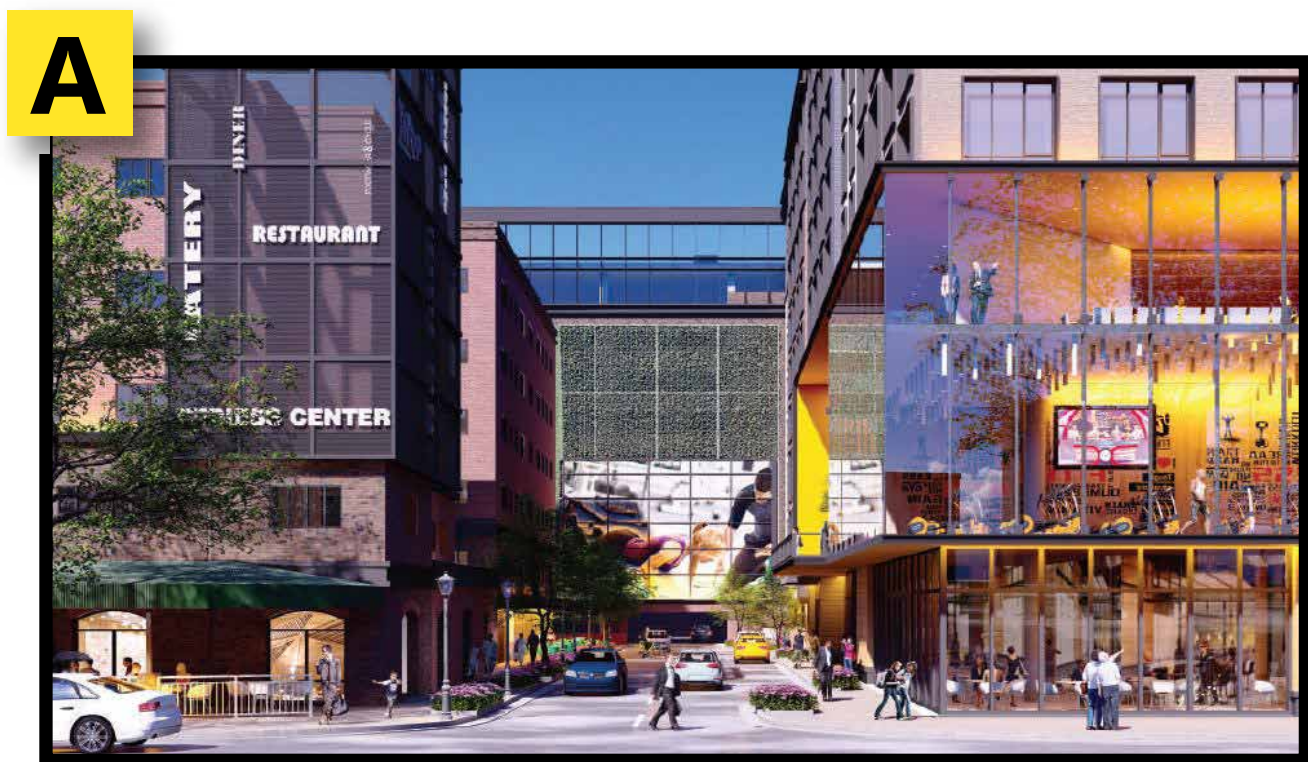
LEGEND

0 100 200 400 600 Feet

Redevelopments

Anticipated CIP Projects

In Progress CIP Projects



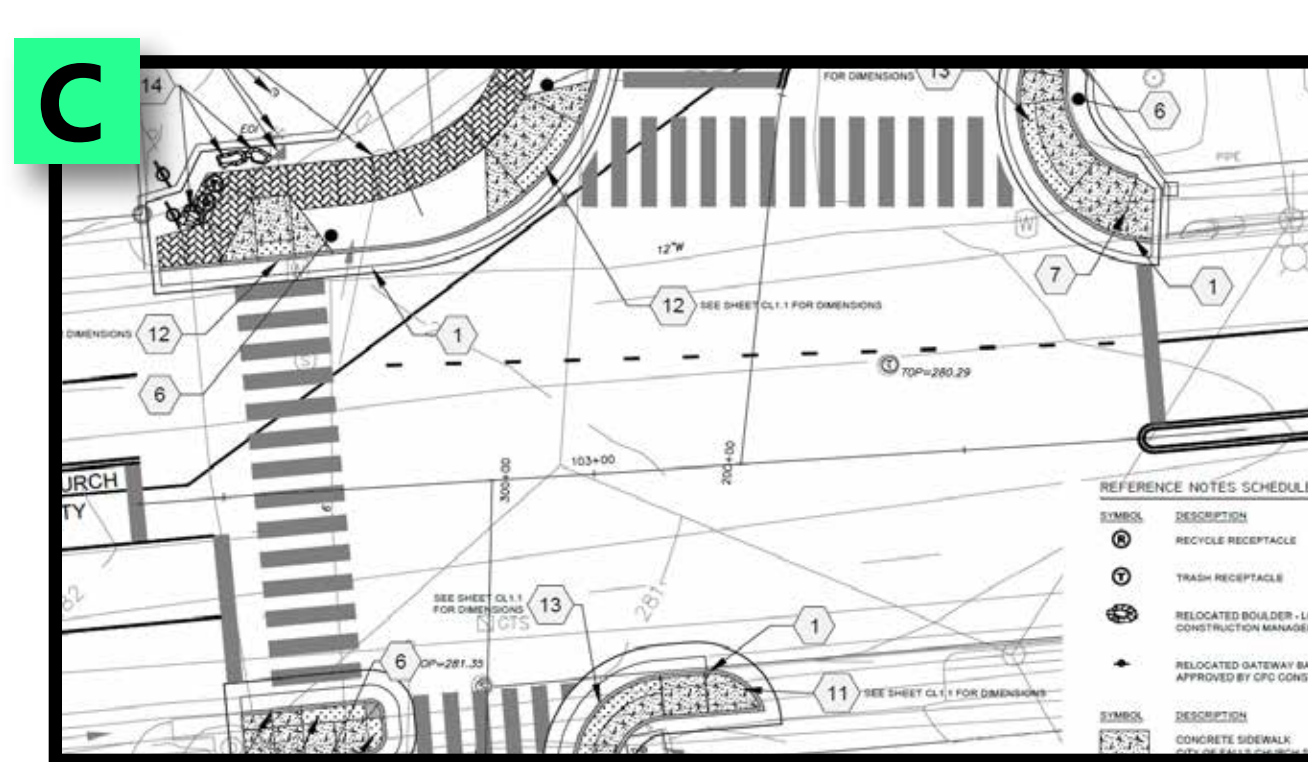
One City Center Development

Application under consideration
Application Received Feb 2021, March 2022 Planning Commission Recommends Approval
Height varies from 6-10 stories
109,912 SF Commercial Use
321,034 SF Residential Use (246 Units)



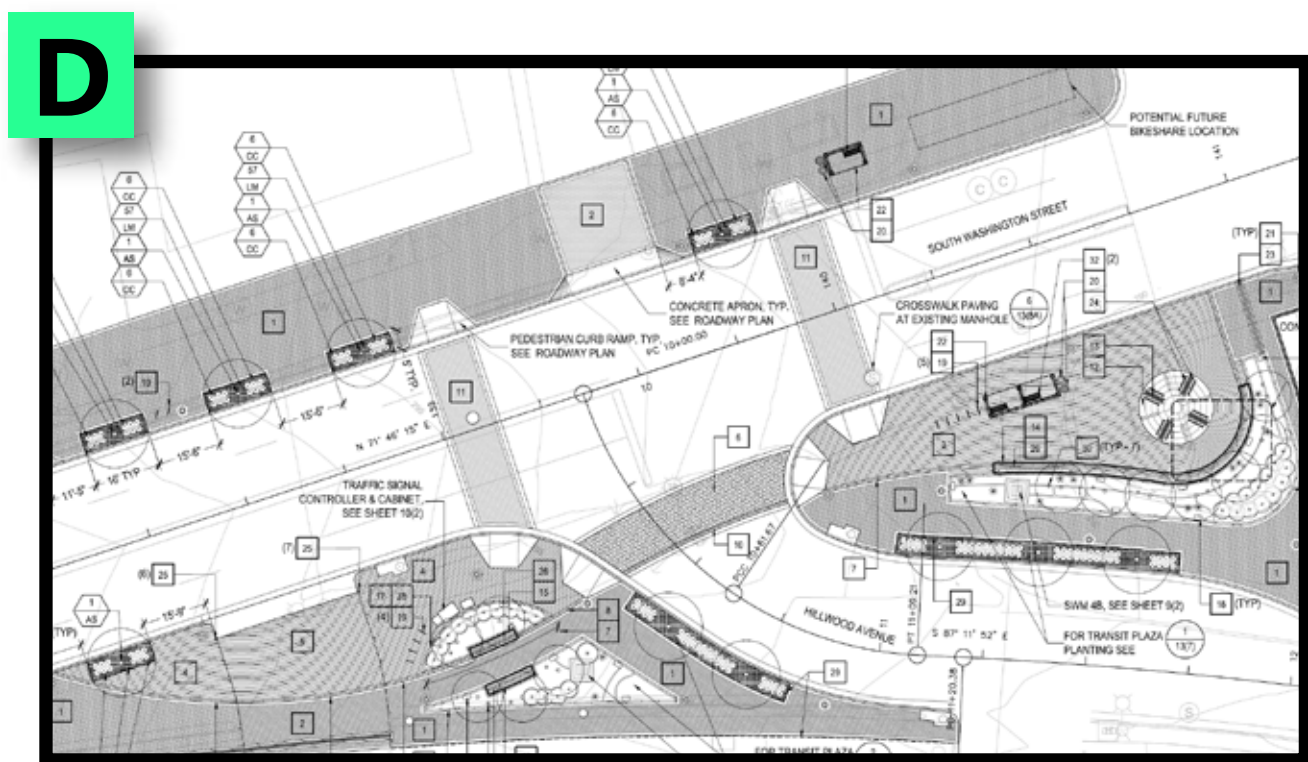
Broad & Washington Development

Start: Spring 2022 | Finish: 2024-2025
Height 7-stories
59,650 SF Grocery
11,500 SF Retail & Restaurant
325,000 SF vResidential (339 Units)



Washington & Maple Improvements

Start: Spring 2022 | Finish: Fall 2022
Approximate Cost: \$1.5M



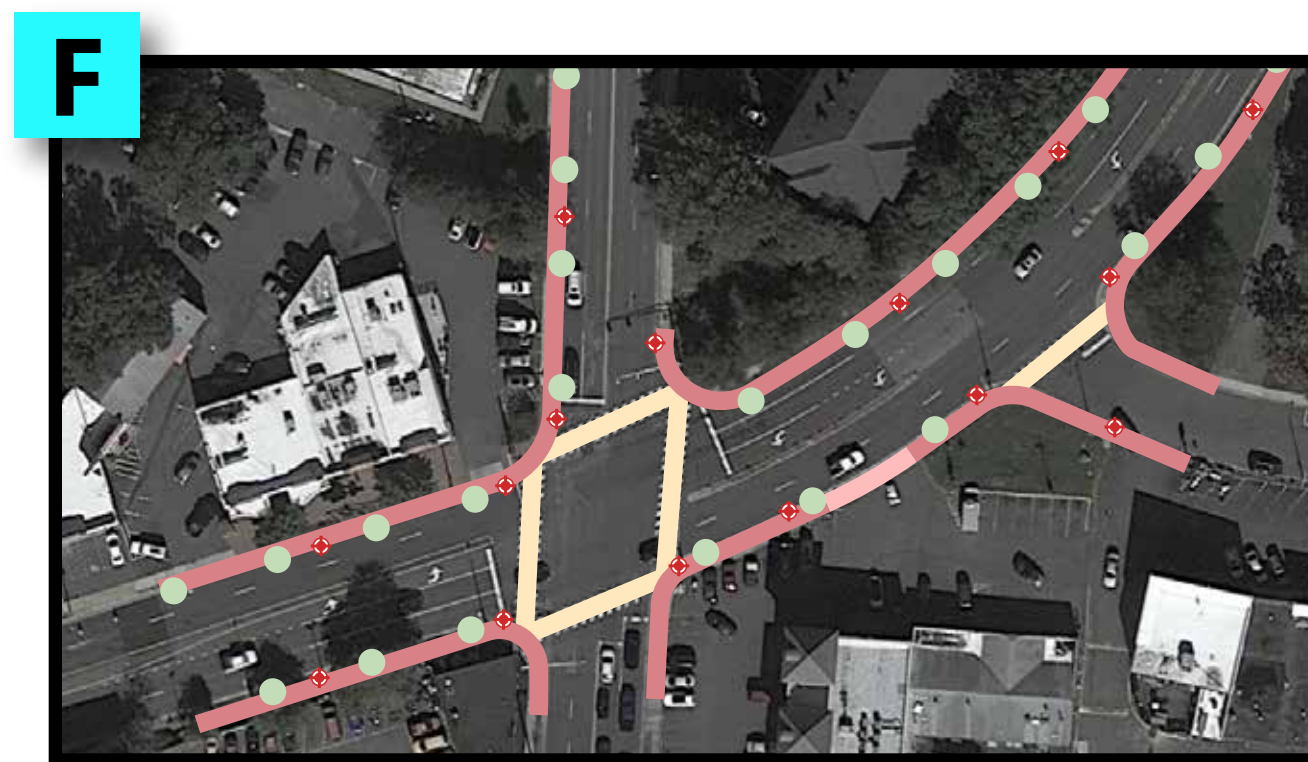
S Washington Multimodal Plaza

Start: August 2020 | Finish: June 2022
Approximate Cost: \$9M



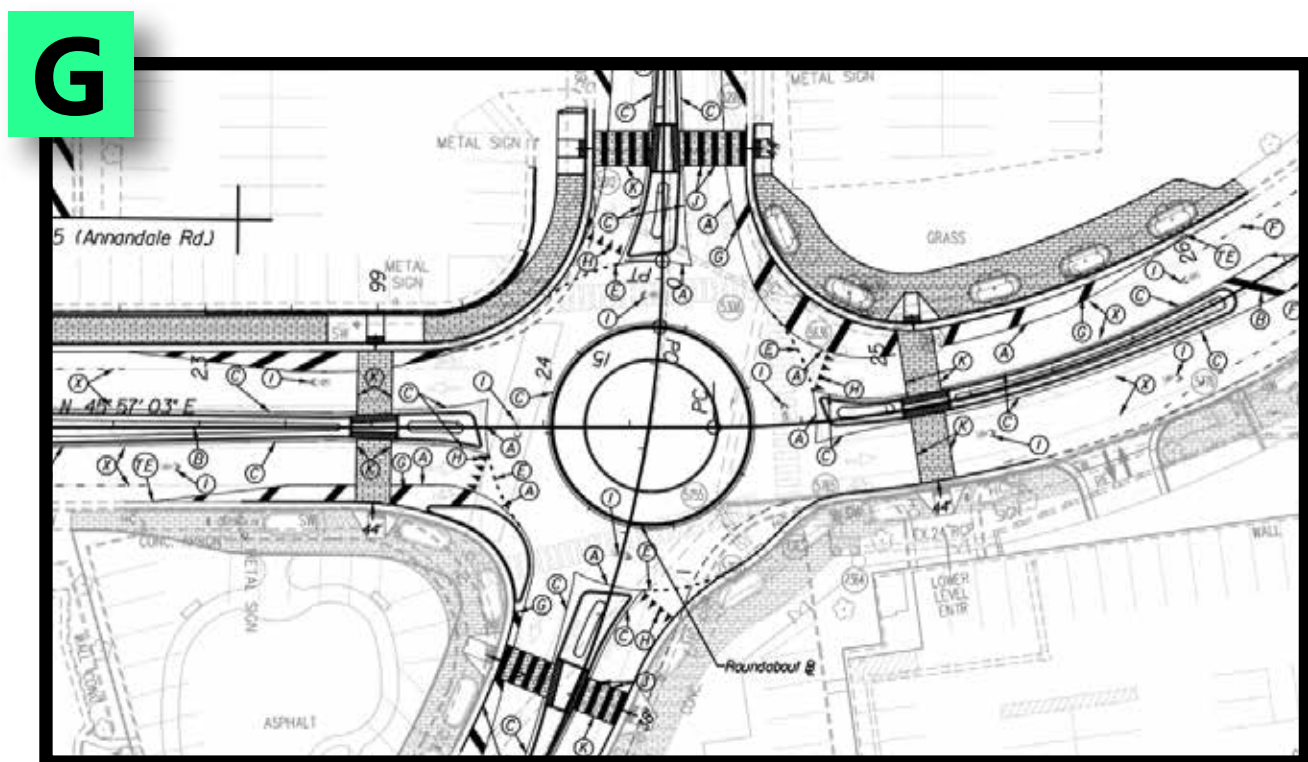
S Washington Bus Stop Expansion

Start: September 2027 | Finish: September 2029
Approximate Cost: \$6.4M (construction)



S Washington & Annandale

Start: Summer 2024 | January 2025
Approximate Cost: 2.4M



Maple & Annandale Traffic Circle

Start: Summer 2023 / End: Summer 2025
Approximate Cost : 1.7M



Greenway Downs Traffic Calming

Start: FY 2024 | Finish: FY 2025
Approximate Cost: \$636K



Tripps Run Trail Study

Start: Spring 2022 | Finish: Summer 2022
Approximate Cost: <\$100K