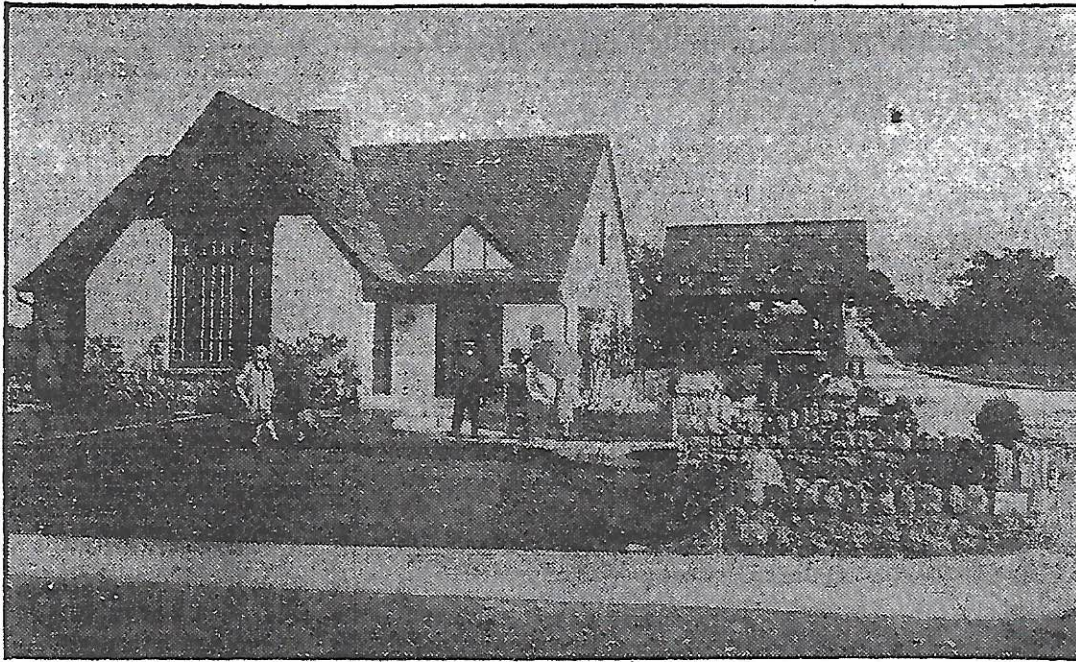


GREENWAY DOWNS OFFICE LOCATED IN BUNGALOW



Office at Greenway Downs, the new Ruby Lee Minar, Inc., home site development adjoining Falls Church, Va. The office designed by A. F. Thelander, architect, as a six room and bath bungalow of permanent construction was started June 1, and was finished July 2, even to the old-fashioned well house and the landscaping and shrubbery.

Washington Post
July 10, 1927
pg. R6

GREENWAY DOWNS LOTS REPORTED SELLING FAST

Prizes Awarded at Minar Development Outing Held on July 4.

EVENTS FOR CHILDREN

The first section of 200 building lots in Greenway Downs, the new Ruby Lee Minar, Inc., home-site development adjoining Falls Church, Va., is reported by Mrs. Minar 40 per cent sold out in the first three weeks it has been on the market. Section 1 was placed on sale Saturday, June 18, and last Friday night more than 80 home sites had been purchased by residents of Washington and Virginia.

A large number of people visited Greenway Downs the Fourth of July. Prizes were given the children in athletic contests and other sports. The winners of the three grand prizes for the girls were Ione Moler, 715 Sixth street northwest; Alice Smith, Falls Church, and Gertrude Smith, Falls Church. Winners of the boys' grand prizes were Richard Smith, 416 Eighteenth street northwest; Frank Putt, Lee Heights, Va., and Jack Twigg, Lee Heights, Va. Other prize winners were Shirley Puffer, Cherrydale, Va.; Alice Ridenhour, 1733 Twentieth street northwest; Jean Smith, Falls Church, Va.; Nancy Knox, Cherrydale, Va.; Katherine Tipton, Lee Heights, Va.; Margaret Browning, Falls Church, Va.; Beverly Ramsdell, Takoma Park, Md.; Charles Ramsdell, Takoma Park, Md.; William

Joseph, 901 Fourteenth street southeast, and James Tipton, jr., Lee Heights, Va.

Prizes also were offered for the best children's pictures taken on the property the Fourth of July. There were a number of entrants, many of whom submitted their pictures early in the week. The winners will be announced next week.

The opening of Greenway Downs, with the great amount of interest it attracted, has directed the attention of the public upon Fairfax County as a coming residential suburb of Washington. Although Fairfax County has many fine properties susceptible to residential development, subdivision operations heretofore have been confined mostly to Arlington County because of its immediate proximity to the City of Washington, having once been a part of the original 10-mile square District of Columbia.

The nearby sections of Fairfax County however, all are within easy driving distance of Washington, Greenway Downs being only 25 minutes by auto from the White House. It is predicted by real estate experts that the next few years will witness the founding of many fine residential developments in historic Fairfax County.